

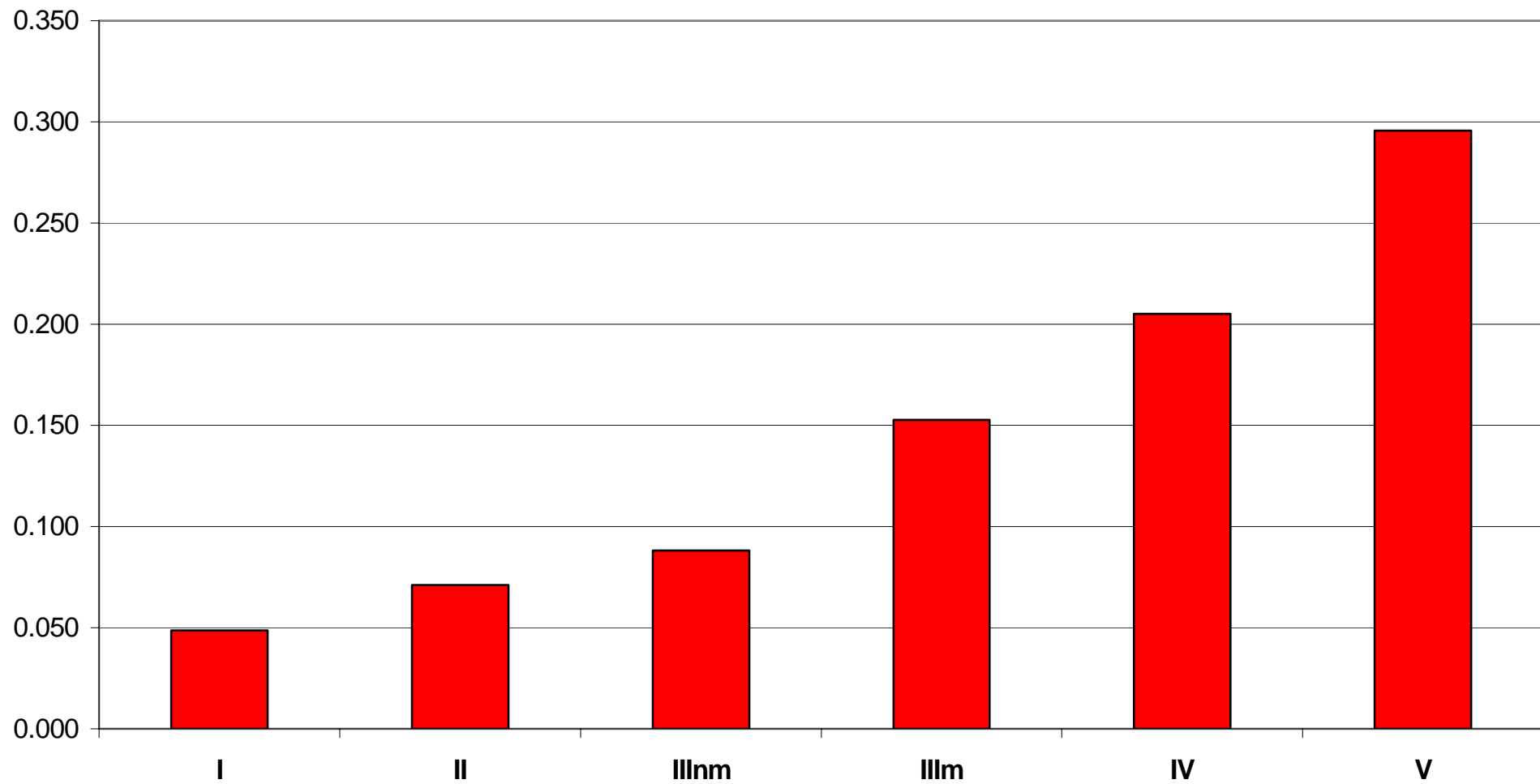


Leading education  
and social research  
Institute of Education  
University of London

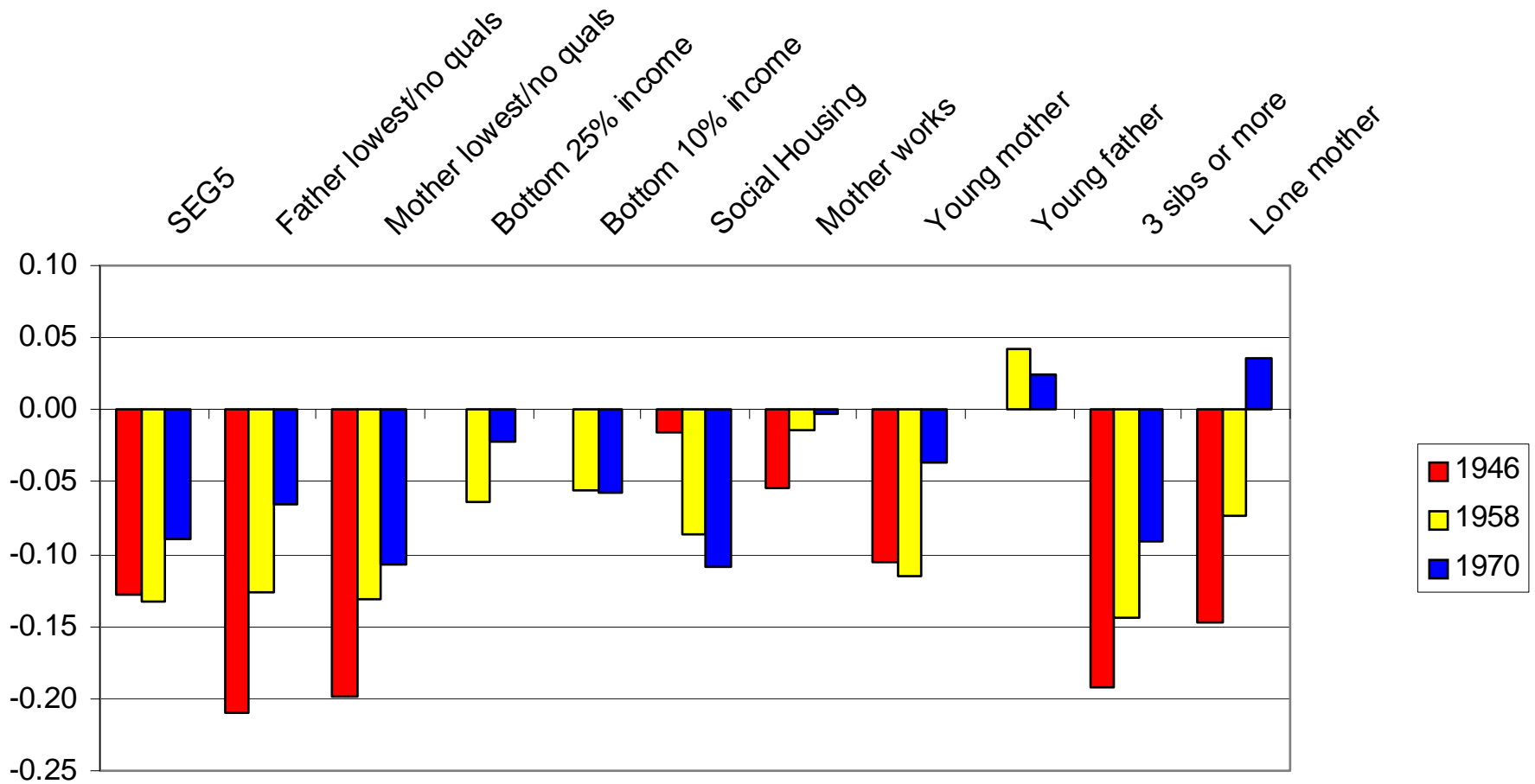
# Turning lives around: what works for vulnerable families

leon feinstein  
institute of education, london  
oct 2007

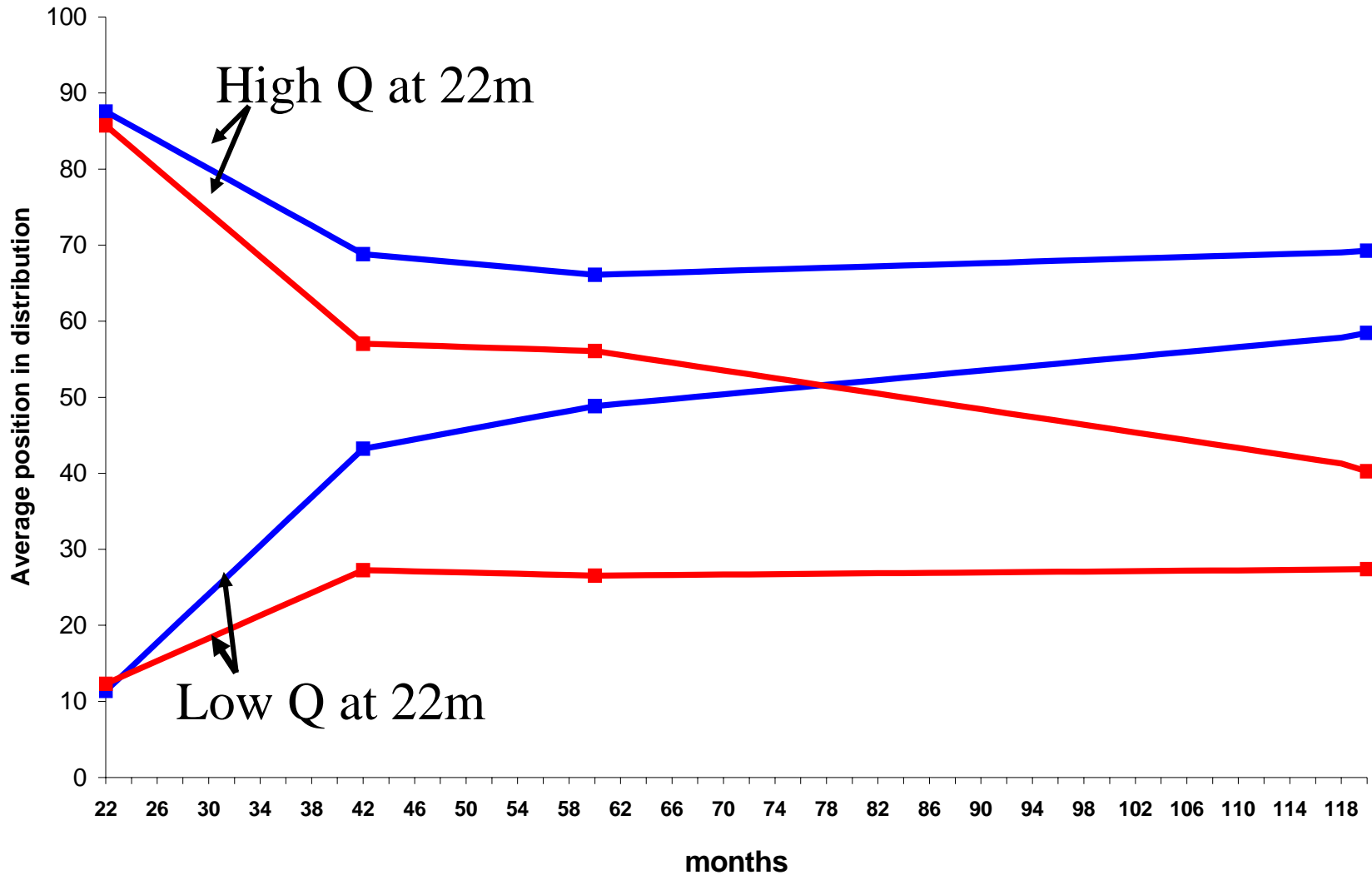
# Probability of multiple deprivation at 30 years, by birth SES, 1970 Cohort Study

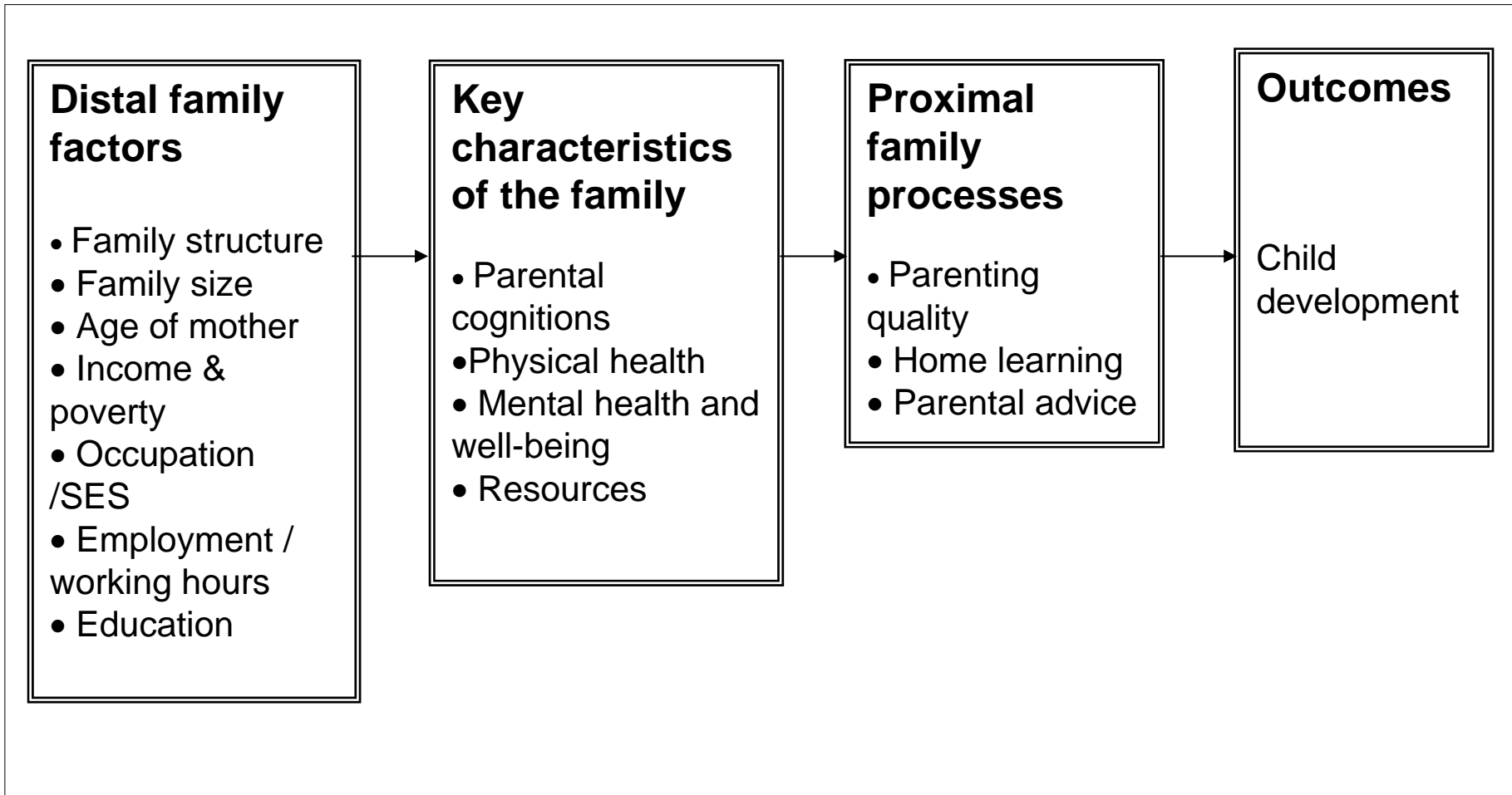


## Change in probability of Level 2, conditional on other risk factors



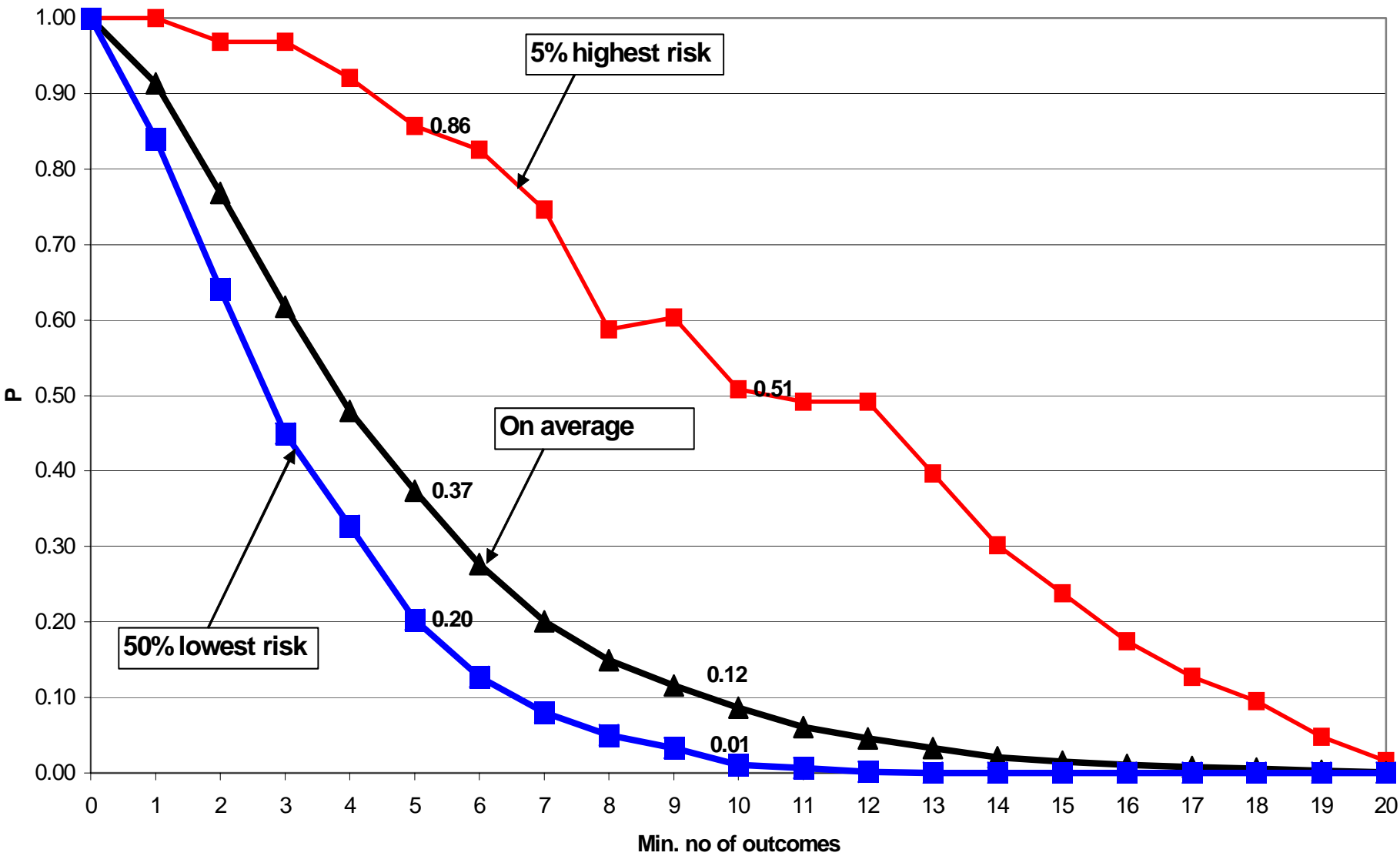
# Relative cognitive shifts, 22m to 10y





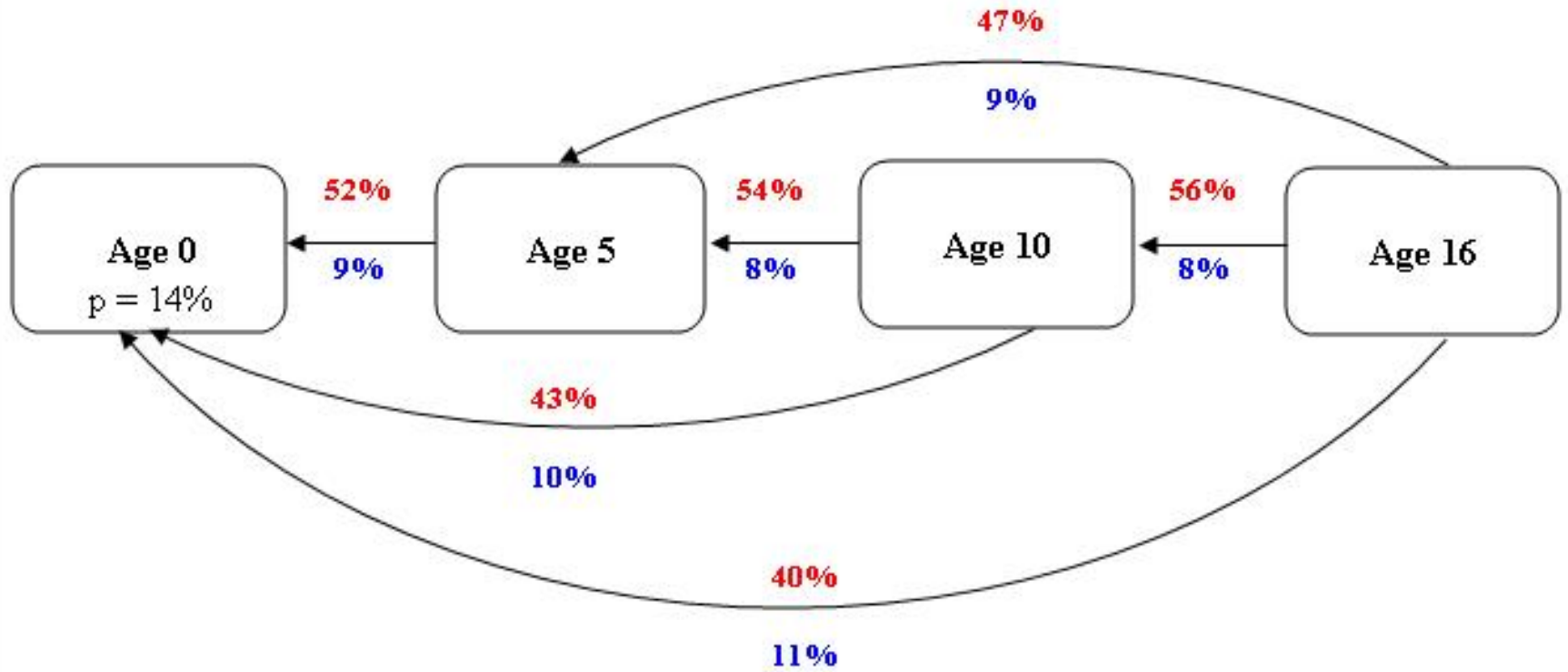
Plus: Dynamics; other contexts; wider socio-economic and cultural forces, .....

# Probability of multiple deprivation by level of risk, 1970 Cohort



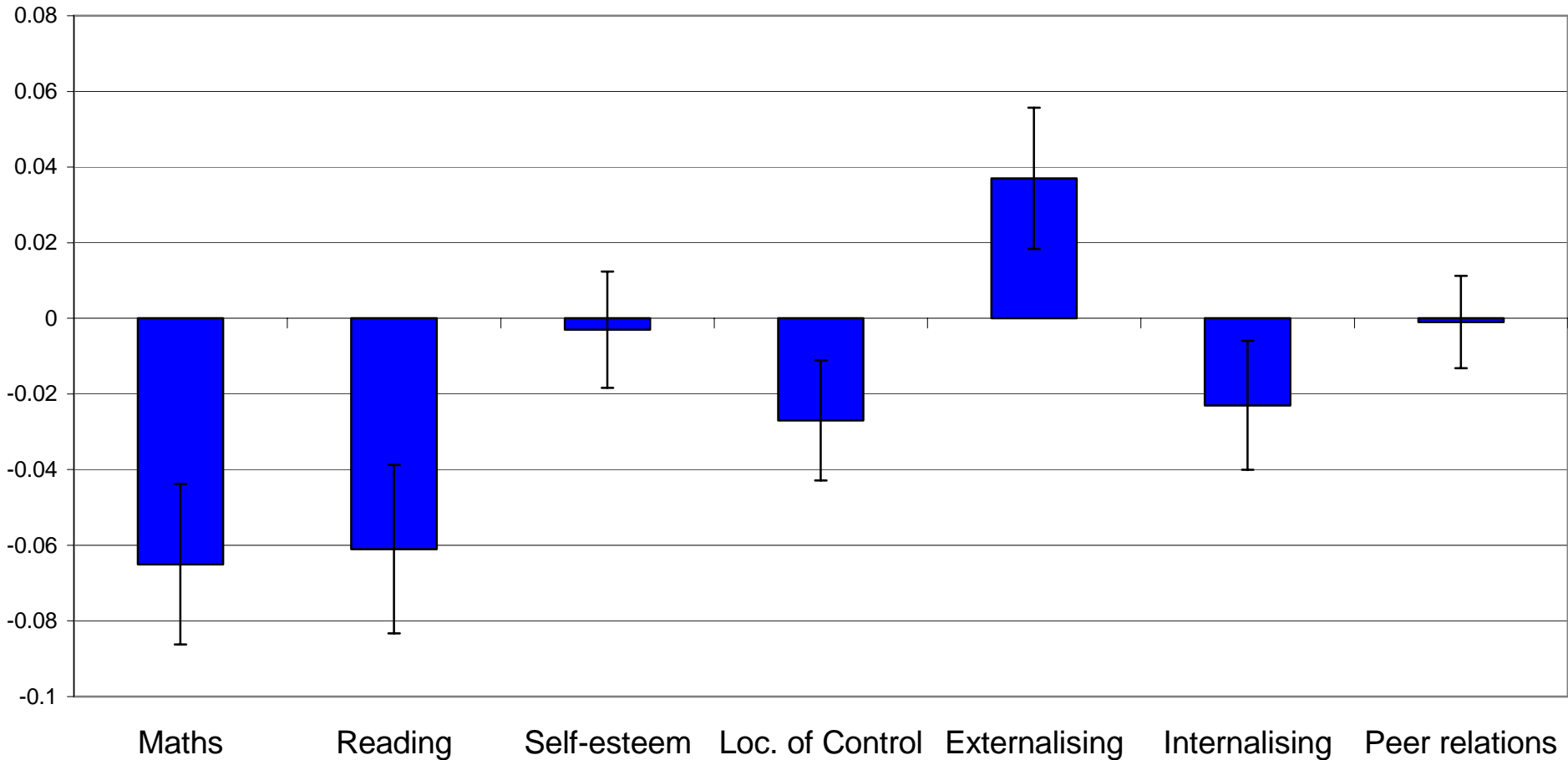
# Risk continuity: Multiple adult deprivation age 30, BCS

P(TP) = Accurate ID  
P(FP) = Deadweight



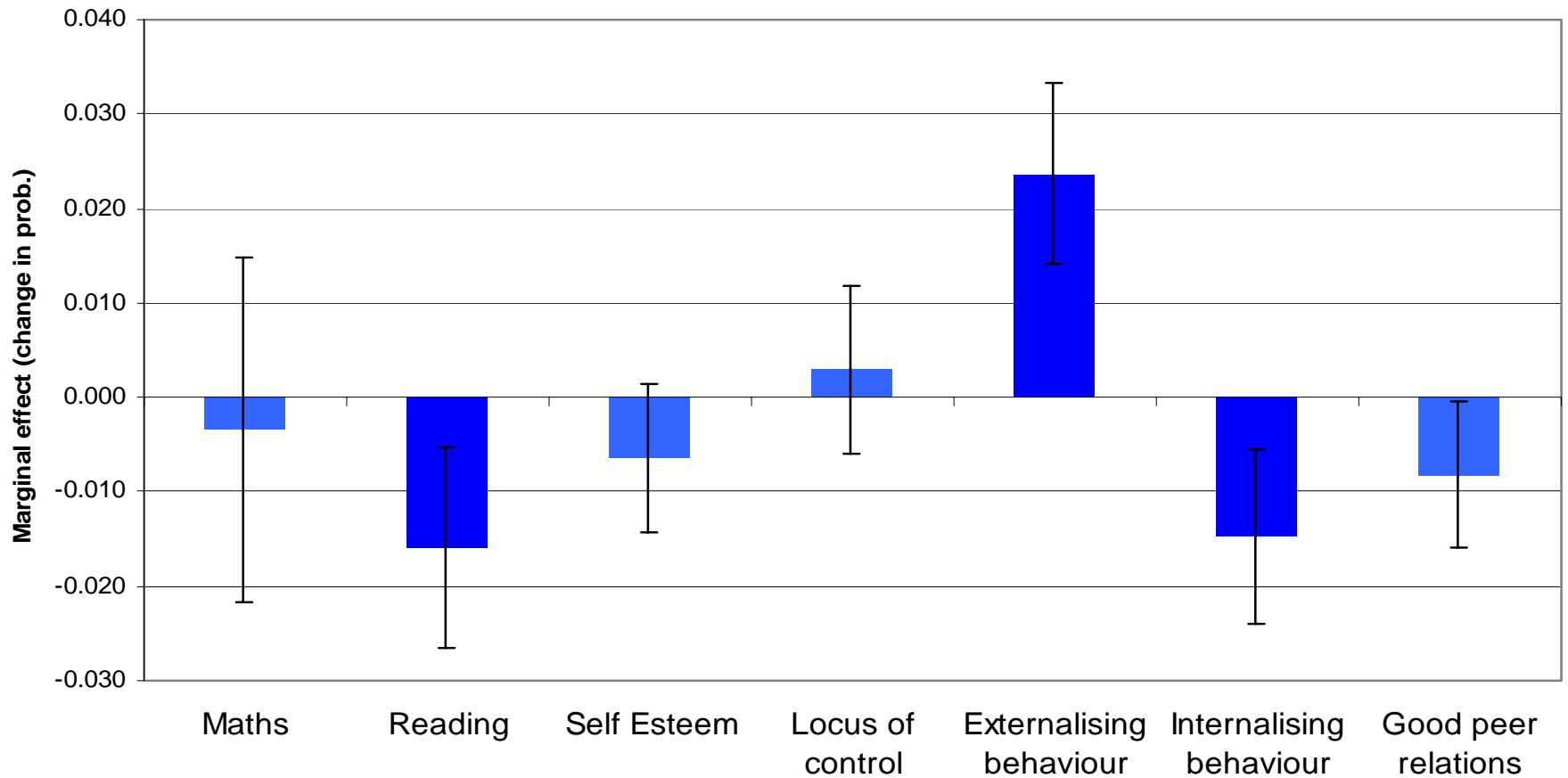
Note:  $100 - P(TP) = P(FN) =$  missed cases

## Predicted changes in probability of not obtaining Level 4; by age 10 capabilities, men



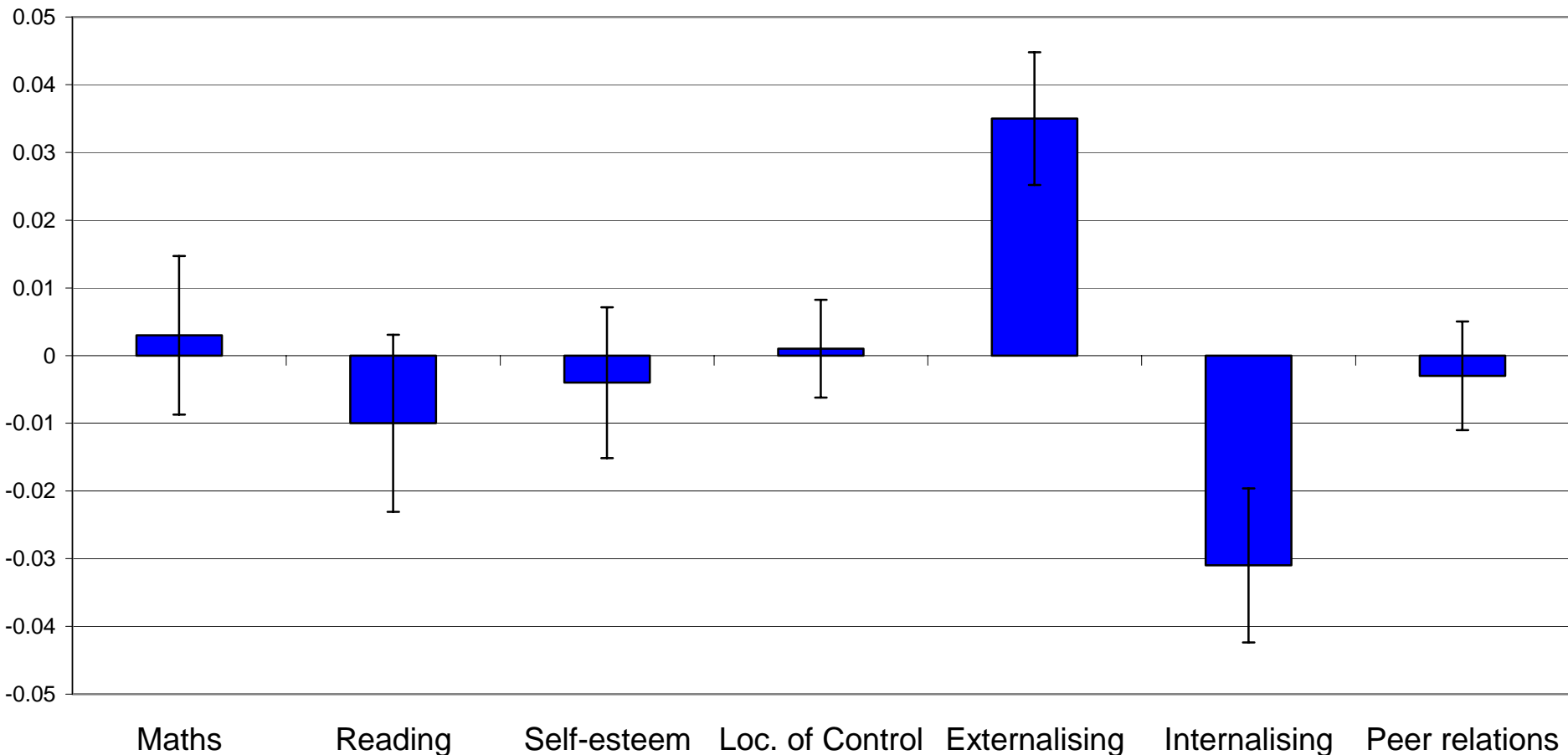
*Error bars indicate 95% confidence*

# Probability of being in workless household with children at age 30



Source: Feinstein, L. and Bynner, J. (Dec 2003), 'The benefits of assets in childhood as protection against adult social exclusion: the relative effects of financial, human, social and psychological assets', Note to HM Treasury.

# Predicted changes in probability of offending; by age 10 capabilities, men



*Error bars indicate 95% confidence*